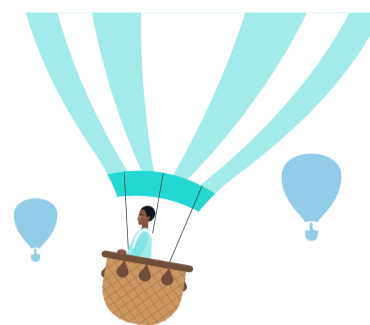




# Congratulations,

The FAFSA<sup>®</sup> Form Is Complete!



First Last

Completion Date

01/03/2024

Data Release Number

4052

Estimated Student Aid Index (SAI)

363

The SAI is **not** a measure of how much student aid you'll receive or how much you'll pay for college. Schools use your SAI to determine your federal student aid eligibility.

Based on the [eligibility criteria](#), you don't appear to be eligible for a [Federal Pell Grant](#). However, you may be eligible for other federal, state, or institutional grants, scholarships, and/or work study programs.

## What Happens Next

### Check Your Email

You will receive an email version of this confirmation page at the following email address: flastname@gmail.com.

### Track the Status of Your Form

Check the status of your form beginning in late January by logging into your StudentAid.gov account and selecting your FAFSA submission from the My Activity section of your account Dashboard. Look for an email at the end of January to learn when your FAFSA information has been sent to your selected schools.

### You Will Receive School Communications

We use the information collected on your FAFSA form to calculate your Student Aid Index (SAI). The SAI lets schools determine the aid you're eligible to receive. The schools you selected on your form will receive your FAFSA information starting in late January, and you'll begin receiving personalized aid information from the schools you've been accepted to several weeks later. Once received, you can contact their financial aid offices directly to ask questions about their student aid packages.

## Track and Manage Your FAFSA<sup>®</sup> Form

You can check the status of your application in the "My Activity" section of your StudentAid.gov account. We will let you know if we need anything more from you.